

ALLDAY
& MILLER



Chaucer Court, Ruislip, HA4 6QZ
£2,000 Per month

 2  2  1  C



Chaucer Court, Ruislip, HA4 6QZ

£2,000 Per month

- First Floor Apartment
- Two Bathrooms
- Allocated Parking Space
- Stunning Communal Gardens
- Hillingdon Council (Band D)
- Two Double Bedrooms
- Excellent Condition Throughout
- Balcony
- Walking Distance to South Ruislip Station

Description

Enjoy a contemporary lifestyle of comfort and convenience in this well presented property, comprising of an inviting entrance hall, modern fitted kitchen and open plan reception/ dining room which enjoys a Juliette balcony. Two generously sized bedrooms (master with en suite bathroom & fitted wardrobes) plus a family bathroom suite off the landing.

Benefits include an allocated parking space, well maintained communal rear garden for the use of all residents.

Situation

Chaucer Court , Glebe Avenue within walking distance of Ruislip High Street, Ruislip Manor and Ruislip Gardens Parade. It is located in close proximity to a number of highly regarded local schools with Sacred Heart and Ruislip High within walking distance. For the commuter, Ruislip, Ruislip Manor and Ruislip Gardens Stations are nearby, offering direct access to the West End and the City (Central, Metropolitan, Piccadilly and Chiltern Lines) This property is conveniently located near to the A40/M25 with great access into London and the Home Counties. The local shops located at Ruislip Gardens Parade are a short walk away offering convenience stores, a post office and a selection of restaurants.



Floor Plans

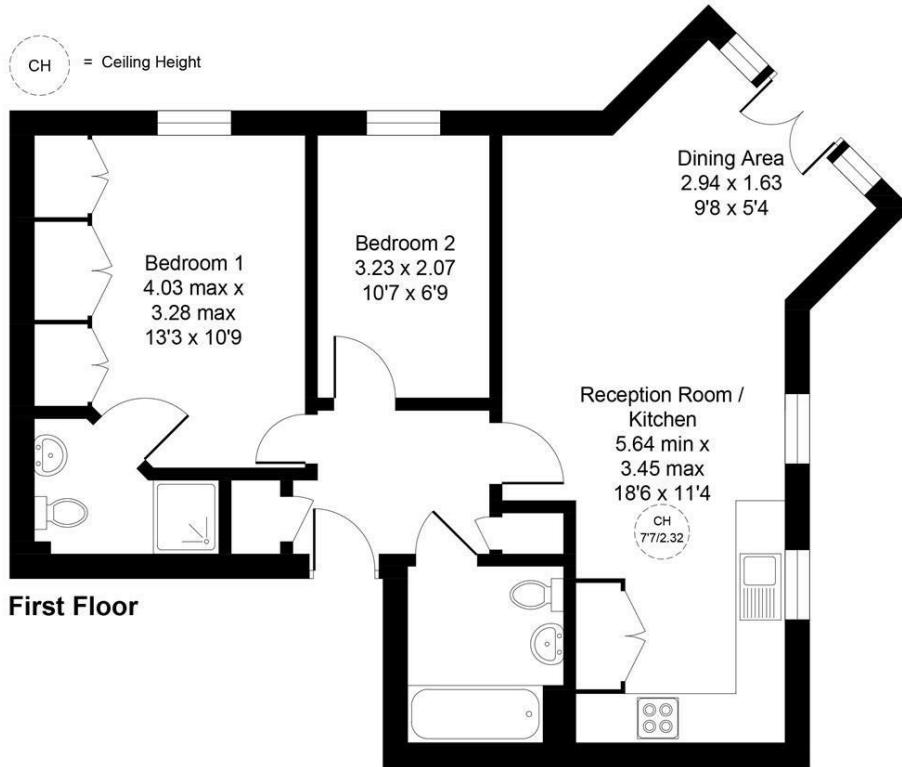
Chaucer Court, Glebe Avenue, Ruislip, HA4

Approximate Area = 648 sq ft / 60.2 sq m

For identification only - Not to scale



CH = Ceiling Height

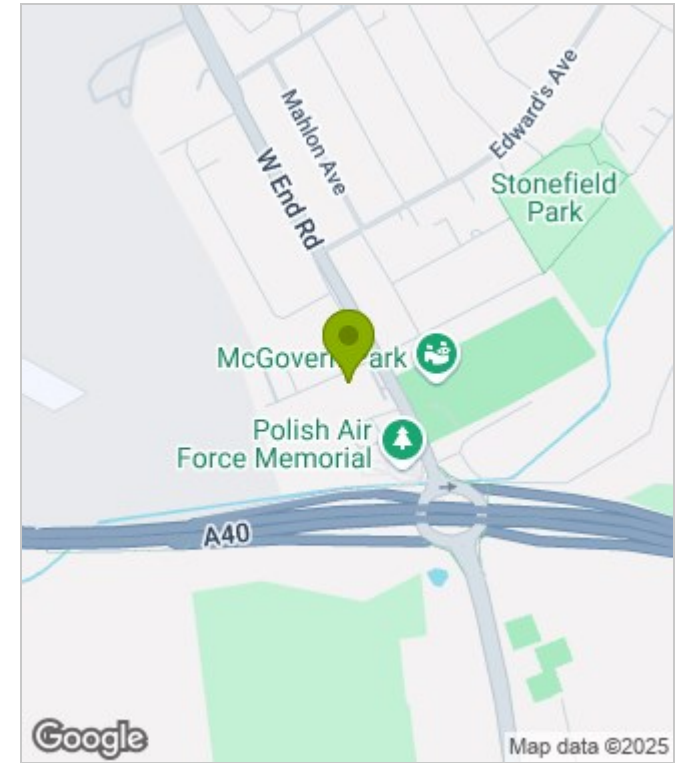


First Floor

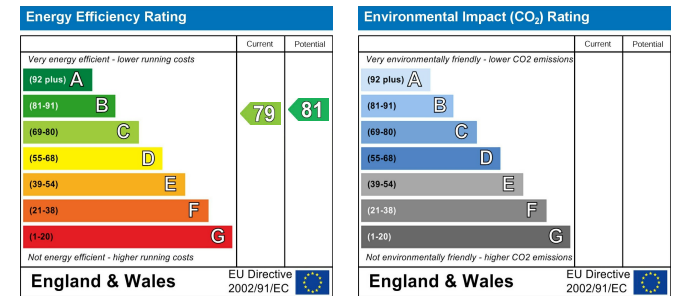
Floor plan produced in accordance with RICS Property Measurement Standards incorporating International Property Measurement Standards (IPMS2 Residential). ©Vizion Property Marketing 2024. Produced for Allday & Miller.

ALLDAY & MILLER
estate agents

Area Map



Energy Performance Graph



These particulars, whilst believed to be accurate are set out as a general outline only for guidance and do not constitute any part of an offer or contract. Intending purchasers should not rely on them as statements of representation of fact, but must satisfy themselves by inspection or otherwise as to their accuracy. No person in this firm's employment has the authority to make or give any representation or warranty in respect of the property.

www.alldayandmiller.co.uk

192 High Street, Uxbridge, Middlesex, UB8 1LB

T: 01895 641 000 | E: sales@alldayandmiller.co.uk

T: 01895 379 549 | E: lettings@alldayandmiller.co.uk